

Dear Official

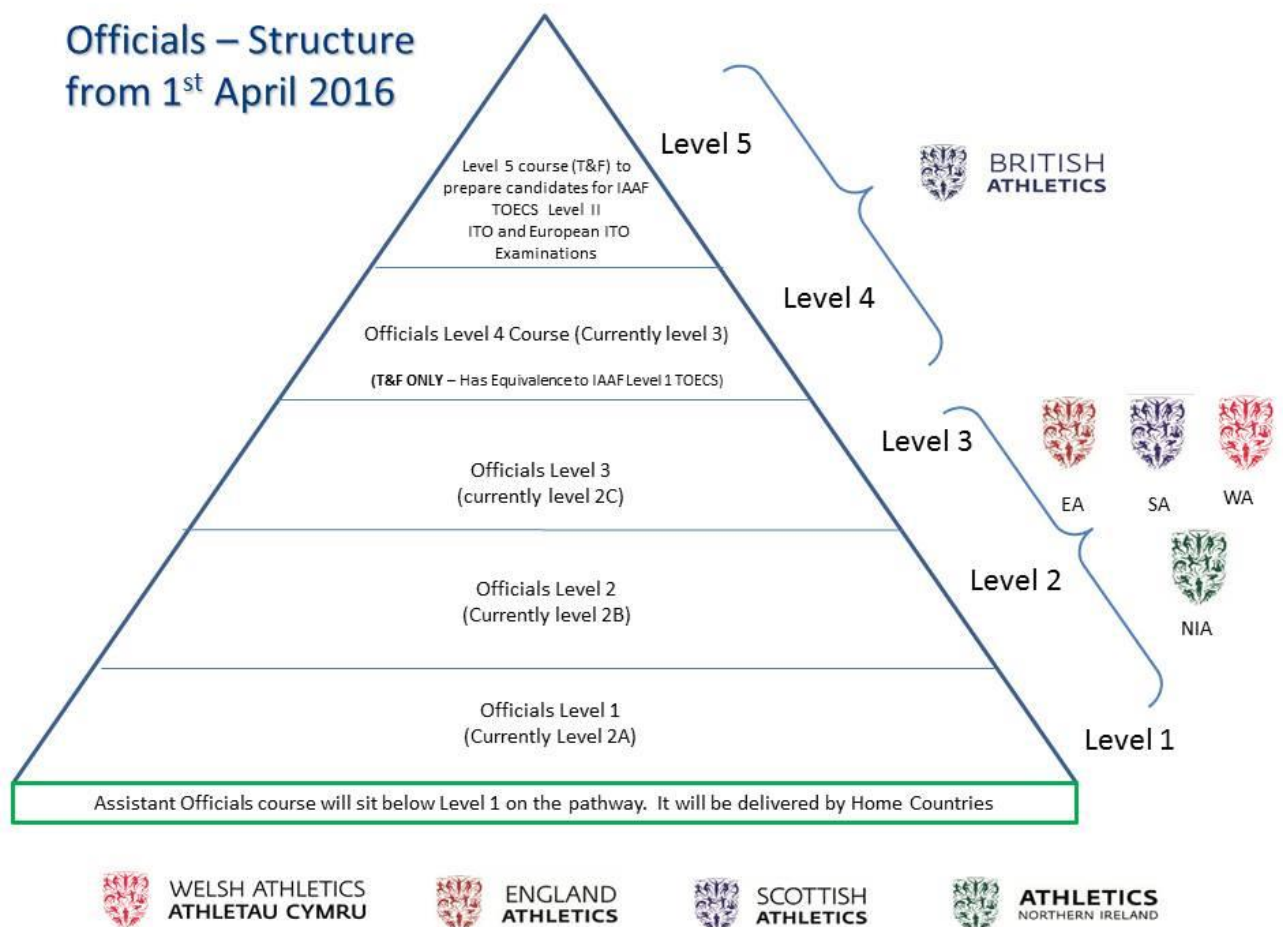
Reference: Simplifying the Officials' Pathway – Renumbering of the Levels– APRIL 1st 2016

Please note that the progression pathway for Race Walking is different to the Track & Field and Endurance table and is presented towards the end of the document. The Officials Structure pyramid is the same for all disciplines

On 1st April 2016 the official's pathway will be updated as outlined in the 2014 – 2016 UKA Rules for Competition. There will be no change to the course content or progression, apart from the change of the numbers within the pathway. The new pathway can be seen below and an explanation of how the changes will affect your Officials licence will be detailed throughout this document.

The Assistant Official award will sit below level 1 on the official's pathway from April 1st 2016. This level will allow an individual to assist a fully qualified official (not relevant to endurance or race walking).

The pathway will also be detailed in the 2016-2018 rule book, appendix D.



HOW WILL THIS AFFECT ME? - TRACK & FIELD and ENDURANCE OFFICIALS

CURRENT LEVEL	FUTURE LEVEL from 1 st APRIL 2016
Assistant Official	Assistant Official
2A	1
2B	2
2C	3
3	4

PROGRESSION – TRACK & FIELD and ENDURANCE OFFICIALS

Progression between each level will remain the same as at present it is just the numbering that changes;

Level (from 1 st April 2016)	Progression (T&F)	Progression Endurance
Assistant Official	Course attendance at Assistant Officials Course and minimum of two competition experience as evidenced on the Assistant Officials Record of Experience Forms.	
Level 1	Course attendance at Level 1 Officials Course and submission of application for accreditation form showing a minimum of 4 competition experiences.	Attendance at Level 1 Endurance Officials Course including the Risk Awareness Module. Submission of application for accreditation form showing a minimum of 4 Competition Experiences.
Level 2	Submission of application for accreditation at Level 2 showing a minimum of a further 6 competition experiences, completion of the level 2 questions and evidence of self-reflection and mentoring.	Submission of application for accreditation at Level 2 showing a minimum of an additional 6 competition experiences and 4 Level modules (including race referee module if looking to referee at local/club races and two compulsory modules 1) Judging & Recording and 2) Sector Marshalling
Level 3	Submission of application for accreditation for Level 3 showing a minimum of a further 10 competition experiences, 1 regional report.	Submission of application for accreditation at Level 3 showing an additional 10 competition experiences, one positive report, the remaining 3 Level 1 course modules.
Level 4	Course attendance at Level 4 Officials Course and submission of application for accreditation for Level 4 detailing a minimum of 30 meetings during a 2 year period (30 meetings for PF over a 3-year period), A minimum of 6 reports; 2 as a team member, 1 from an out of region reporter, generally as a team member, 1 using relevant technology, 1 as Clerk of Course and 1 as referee/chief. In addition rules questions have to be completed successfully (published on June 1st each year) Full information on the requirements for Level 4 is published each year on the Officials, Education and Training section of the British Athletics Website.	Attendance at a Level 4 Endurance Officials Course with completion of 4 level 4 modules. Submission of application for accreditation to Level 4 showing a minimum of 20 competition experiences and 4 positive reports.
Level 5	To be determined.	To be determined.

What do I need to do?

You won't need to do anything. The change will happen automatically and you will be sent a new licence showing your qualifications by post (subject to maintaining licensing conditions – including police records disclosure and Health & Safety Course and Risk Awareness where applicable)

If you are currently a level 2A official you may wish to submit your application for accreditation to Level 2B before 1st March 2016 so that you can move directly into Level 2 when the conversion takes place.

RACE WALKING - CONVERSION AND PROGRESSION TABLE

The pathway for Race Walking will be the same as published for all other officiating disciplines (although the highest level initially will be Level 4). Because the pathway for Race Walking was different than for the other officiating disciplines the conversion chart to the new pathway will be different. This is detailed below;

CURRENT LEVEL (RW/UKA)	FUTURE LEVEL from 1st APRIL 2016	PROGRESSION (RACE WALKING)
	Level 1	Course attendance at Level 1 Officials' Course and submission of application for accreditation form showing a minimum of 4 competition experiences. This must include at least one 'A' race. Events may be on the track or road.
Level 2 (Equivalent to 2b UKA)	Level 2	Submission of application for accreditation at Level 2 showing a minimum of a further 6 competition experiences and completion of the level 2 questions and evidence of self-reflection and mentoring. The first 10 experiences must include at least 6 'A races' and one can be as judges' recorder. Events may be on the track or road.
Level 3 (equivalent to 2c UKA)	Level 3	Submission of application for accreditation for Level 3 showing a minimum of a further 10 competition experiences, 1 regional report. These must include at least 8 'A' races and 2 can be as judges recorder. Events may be on track or road.
Level 5	Level 4	To be determined.

FAQ Sheet

Q. Why are you making changes to the officials' pathway again?

A. We are bringing together all disciplines into pathway consistent levels approach. The new pathway has clear progression through the levels without the need to use sub groups within the levels. The new pathway simplifies the officiating pathway with Level 1 representing the first qualification level as an official. The Assistant Official will sit beneath the Level 1 as it qualifies an individual to assist a fully qualified official. UKA value all of our officials and recognise the many hours that you dedicate to our sport. We want to provide a clear and transparent pathway to all of our officials whether you work at the grassroots level or have aspirations to develop through the official's pathway.

Q. I am currently a Level 2A and think that it is unfair that you are downgrading me to a level 1.

A. The level at which you operate and the duties you will undertake are the same as you have been working at as a level 2a official. It is the labels that are changing but your level of operation will remain the same. If you would like to work towards your level 2b and can achieve this before the transfer date then you will be transferred to level 2 on April 1st 2016. In order to progress from Level 2a to 2b you will need to complete the Level 2 questions, complete a minimum of 6 experiences on your record of experience and show evidence of self-reflection and mentoring (see progression chart in the documentation above).

Q. Why can't you just leave the pathway as it was?

A. We now have all the disciplines together with one simplified pathway which has clear progression through from Level 1 to Level 5.

Q. Will the changes just automatically happen on 'My Athletics' Portal?

A. Yes your individual record on the 'My Athletics' Portal will automatically change on 1st April 2016 to reflect the new officials pathway.

Q. When will the course titles change and what will happen if I undertook a course which was titled Level 2?

A. The Course titles will officially change on 1st April 2016 however, to ease the transition some courses may be marketed as Level 1 courses prior to the change-over on 1st April. The course content will remain the same, just the title will change in line with the new pathway. March is always a busy time for delivery of Level 2 courses, you may find that the courses are advertised as Level 1 Courses (previously Level 2) for the March 2016 cohort of courses. You may also receive Level 1 Course Materials if you attend a course in March 2016. We will ensure that the courses are clearly labelled as Level 1 (previously known as Level 2) to avoid confusion.

If you have attended a level 2 course then this will be recorded on your profile under events. Progression to achieve Level 1 (previously level 2) will not change (as detailed in the progression chart) and progression to Level 2 (previously 2b) will also not change (as detailed in the progression chart).

Q. Who can I contact if I wish to discuss my individual case?

A. If you wish to discuss your individual case please email comptemp@uka.org.uk briefly outlining your query and include your contact details. You will be contacted to discuss your individual case. Please note that if a lot of requests are received that it may take a little time to work through the list. Please also note that the Christmas period will also affect the timescales for replying to individual queries.